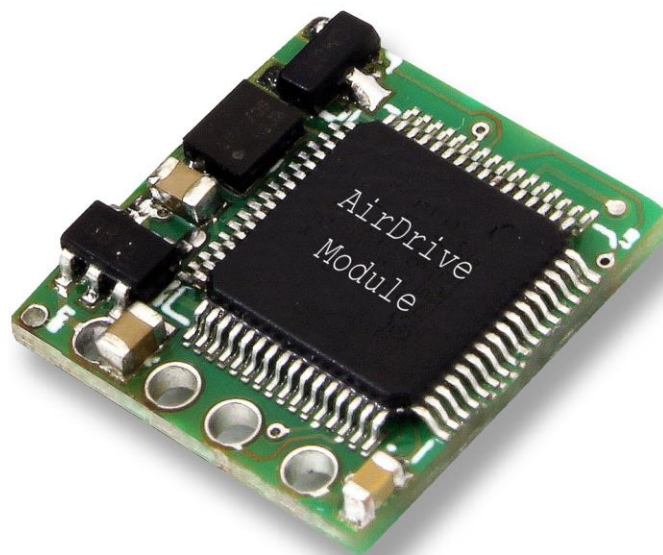


# AIRDRIVE FORENSIC KEYLOGGER MODULE QUICK START



## Important tips:

- Intended for installing in a USB keyboard, does not work with laptop keyboards
- Requires disassembly of USB keyboard
- Requires tools and basic soldering skills
- Be sure to obey keystroke recording laws and regulations in your country!

Before starting, make sure you have a soldering iron with a fine tip.

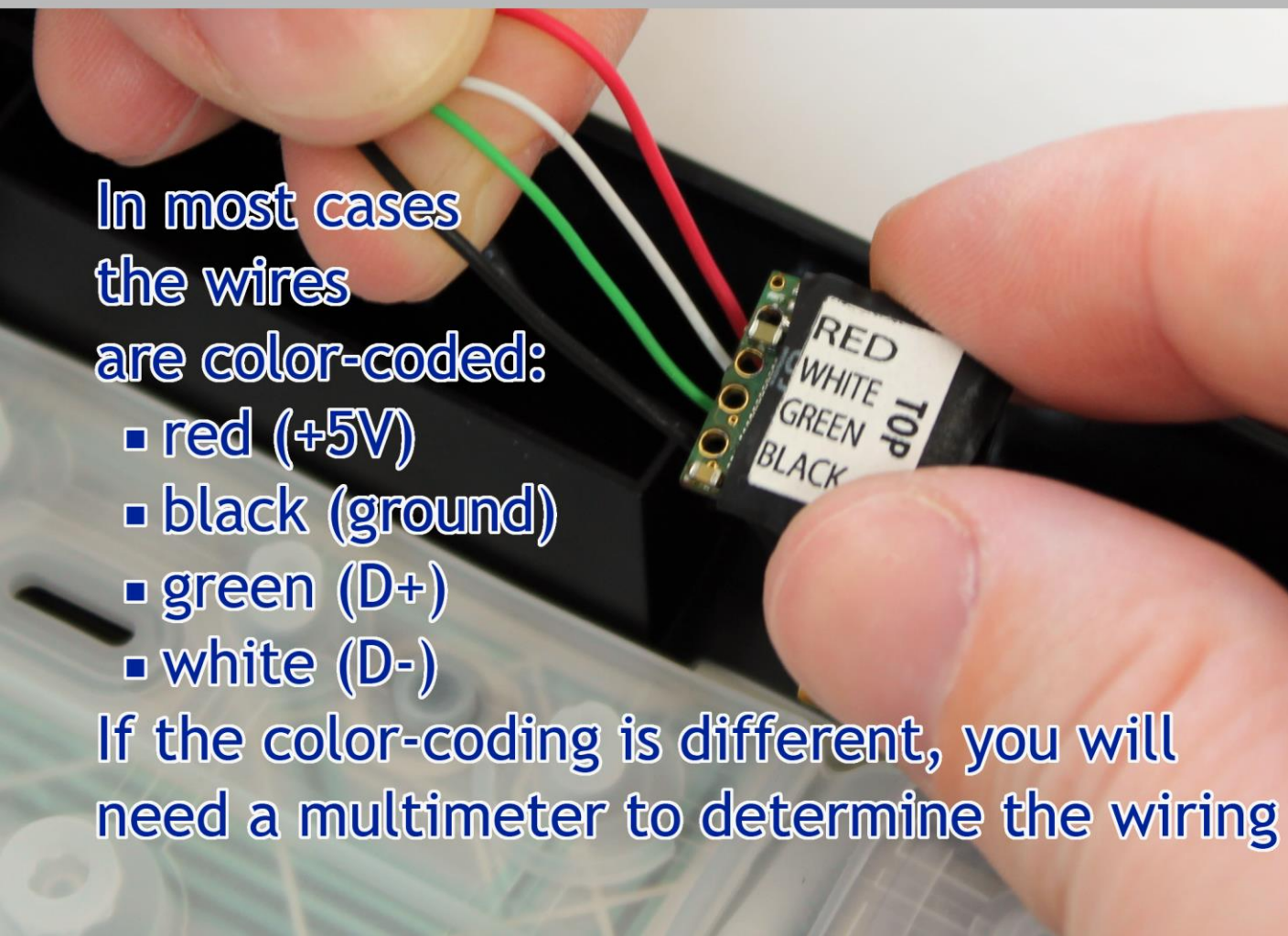


Open the USB keyboard and locate the controller inside, then find a place where the module will fit

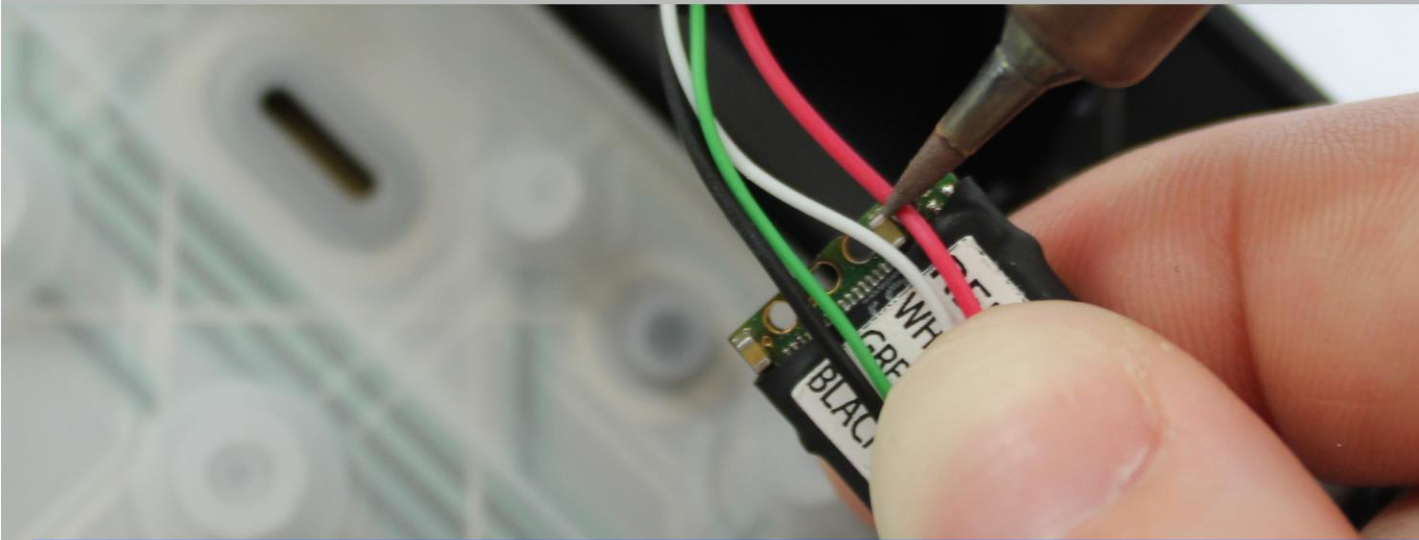
In most cases the wires are color-coded:

- red (+5V)
- black (ground)
- green (D+)
- white (D-)

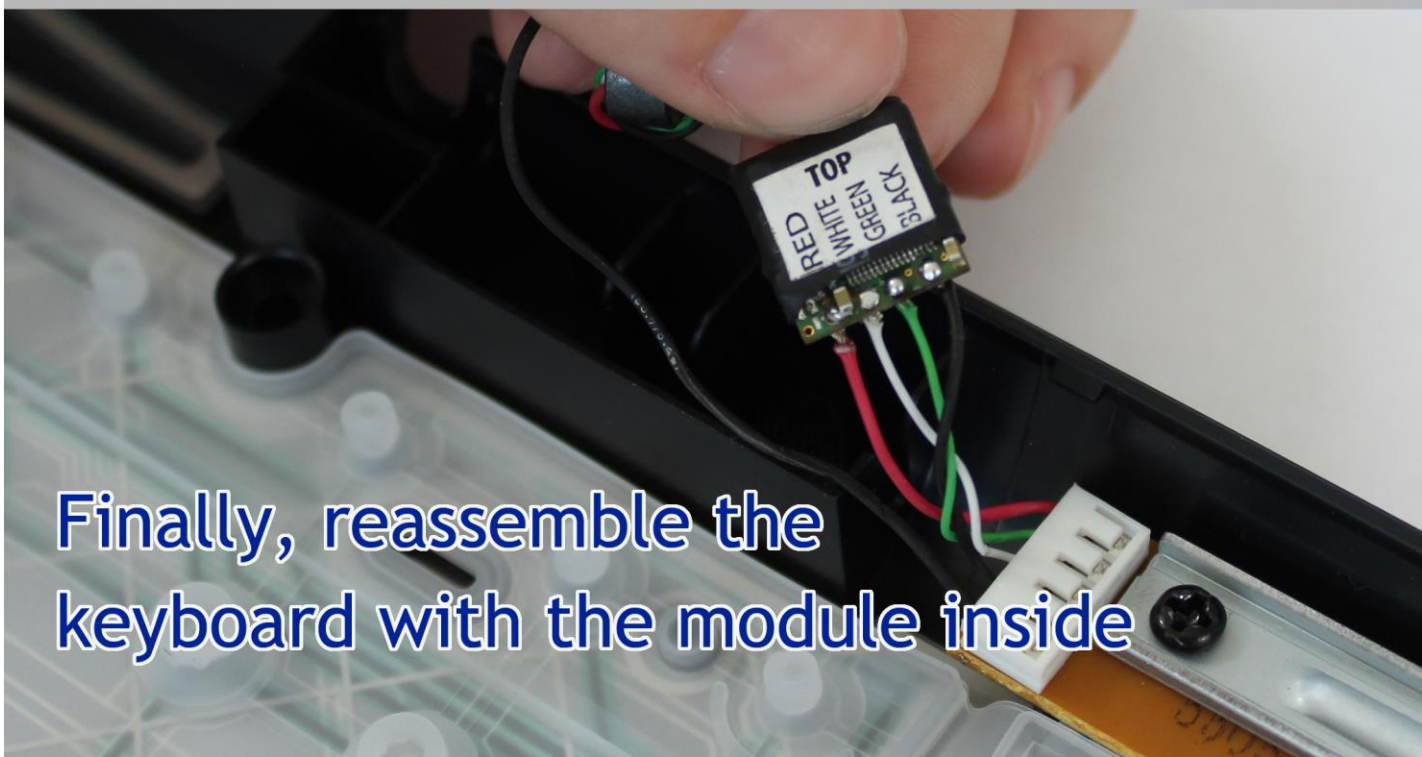
If the color-coding is different, you will need a multimeter to determine the wiring



Solder the wires to the corresponding pads, melting through the isolation



Double check the soldering, and check for short-circuits. **A mistake will most likely damage the module and keyboard.**



Finally, reassemble the keyboard with the module inside



Connect the keyboard  
with the integrated  
module to  
a USB port

Connect to WiFi network  
**AIR\_XXYYZZ**

where XXYYZZ is a distinctive device ID

Use any web  
browser to  
open address  
**192.168.4.1**

**Information:**

the device is actually a  
WiFi Access Point to  
which you can connect  
using a laptop, tablet,  
smartphone, or desktop

